

HGF11 HAGG101
Durham University
Conservation Services
Conservation Record

Date : 12/11
Conservator : Jennifer Jones
Email : j.a.jones@durham.ac.uk
Tel : 0191 334 1139

SF No : 1Δ	Context : 003	X-radiograph No : 6338
Object : Frags	Material : CuA	Photography : Digital pix bc&ac

Description :

Four fragments of highly corroded copper alloy, possibly from the same artefact.

- Fragment of slightly dished, circular CuA 15.5mm+ diam, 0.4mm thick. The inside surface has traces of white metal plating. The outside has part of a lightly inscribed circle and a central, irregularly shaped depression.
- Part of a curved ?edging strip, 16mm long, 2mm wide and 0.6mm thick, ends broken. Both sides have white metal plating. There is a very slight ridge running around the inside surface.
- Two similar but non-joining, irregularly shaped decorated CuA fragments, 15 x 11 and 14 x 7mm max x 0.5mm thick. They have traces of repoussée decoration with ?floral motifs, perforations and pelleting against a background of extremely fine ribbing at c4 lines per mm.

The four pieces possibly formed part of piece of jewellery such as a brooch, though no relationship between the fragments could be established. The even thinness of the metal and the extremely fine surface ribbing suggests factory manufacture and therefore a post-medieval date.

EDXRF analysis suggests the decorated pieces are made from leaded brass. No surface plating was detected on these, but a very dark discontinuous patination suggests they were possibly originally tinned.

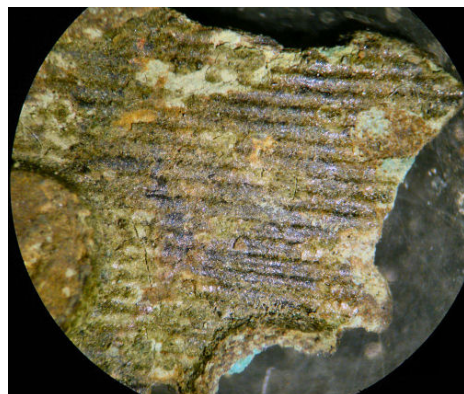


Outside

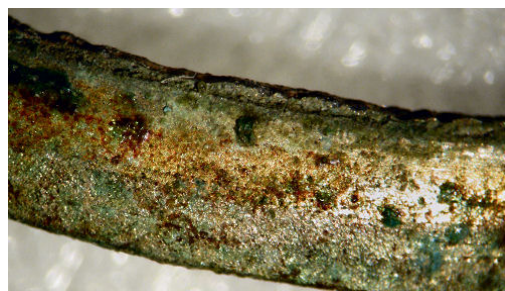


Inside

<p><u>Condition :</u></p> <p>Very highly corroded and stable with no metal remaining.</p> <p><u>VERY FRAGILE HANDLE WITH CARE</u></p>
<p><u>Conservation Treatment :</u></p> <ul style="list-style-type: none"> • Mechanically cleaned using hand tools and H₂O/industrial methylated spirit/non-ionic detergent to remove obscuring soil and loose surface corrosion. • Consolidated with 6% Paraloid B72 (an ethyl methacrylate co-polymer) in acetone.
<p><u>Analysis :</u></p> <p>EDXRF (energy dispersive X-ray fluorescence) analysis suggests the decorated pieces are made from leaded brass.</p>
<p><u>Storage :</u></p> <p>Should be stored in an airtight container at a stable temperature and below 40% RH, to inhibit further corrosion. The RH should be controlled by active silica gel, which is regularly monitored and regenerated as necessary.</p>



Very fine ribbing (4 lines per mm) on surface of decorated fragments X10



White metal plating on outside of edging strip X10